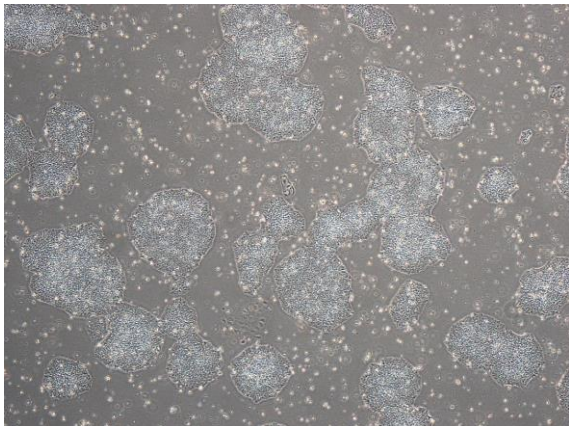
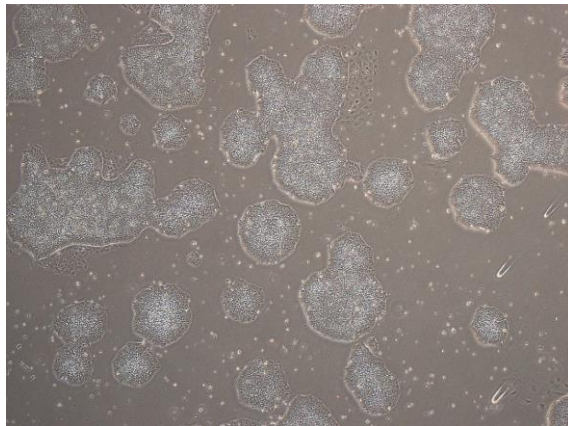


【 CiRA-j-1068 】 Morphology of iPSC colonies

CiRA-j-1068-A: passage-2



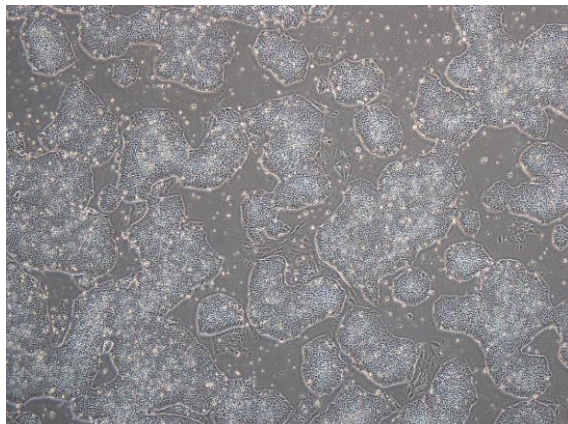
CiRA-j-1068-B: passage-2



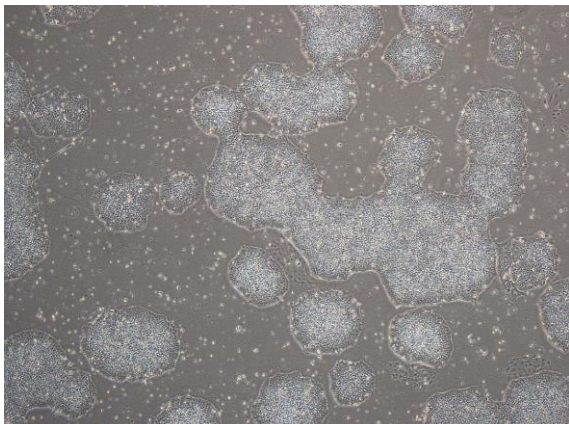
CiRA-j-1068-C: passage-2



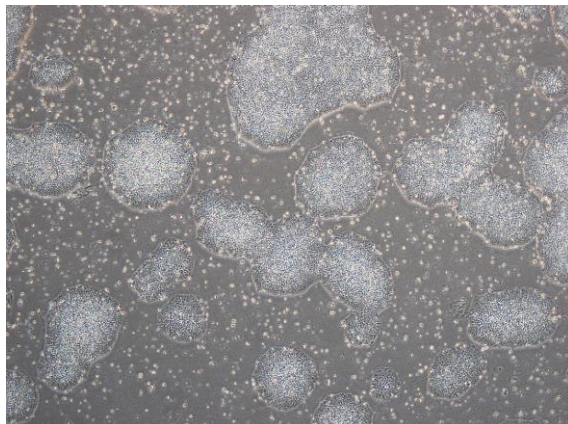
CiRA-j-1068-D: passage-2



CiRA-j-1068-E: passage-3



CiRA-j-1068-F: passage-3



(All images were captured at 4x magnification)